



NXT Power Desktop UPS User Manual

250 / 400 VA

**NPTU250-GL-N
NPTU400-GL-N**

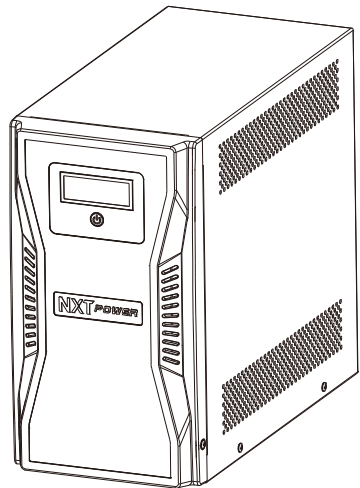


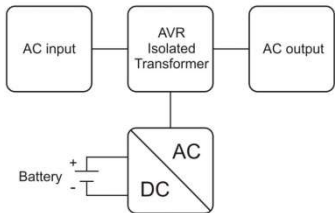
Table of Contents

1. Safety Instructions and Storage/ Battery Care	1
2. UPS System Block Diagram.....	1
3. Front Panel Display	1
4. Product Features.....	2
5. Button Function	2
6. Installation and Power On	2
7. Alarms and Status Icons	3
8. Specifications.....	3
9. 24VDC 3A Output Installation	4
10. Battery Replacement Procedure	4

1. Safety Instructions and Storage/ Battery Care

- SAVE THESE INSTRUCTIONS.** - This manual contains important instructions that should be followed during installation and maintenance of the UPS and batteries.
- Read the instructions carefully to become familiar with the equipment before starting the install. Notify the carrier and dealer if there is any damage.
- Adhere to all national and local electrical codes.
 - This UPS is intended for indoor use only.
 - Do not operate this UPS in direct sunlight, in contact with liquids, or where there is excessive dust or humidity.
 - Be sure the air vents on the UPS are not blocked. Allow adequate space for proper ventilation. Keep rear panel a minimum of 8 inches (20cm) from any obstructions.
 - For a UPS with a factory installed power cord, connect the UPS power cable directly to a wall outlet. Do not use surge protectors or extension cords.
 - The battery typically lasts for three to five years. Environmental factors will impact battery life. Elevated ambient temperatures, poor quality utility power, and frequent short duration discharges will shorten battery life.
 - The equipment and batteries are heavy. Remove the batteries before installing the UPS and practice safe lifting techniques adequate for the weight of the equipment.
 - Before installing or servicing the equipment check that the Disconnecting from the AC mains and load. The UPS contains internal batteries and may present a shock hazard even when disconnected from the branch circuit (mains).
 - Doing wiring, maintenance service and batteries replacement should be performed or supervised by personnel knowledgeable about batteries and the required precautions.
 - When replacing batteries, replace with the same type and number of batteries or battery packs.
 - CAUTION: Do not dispose of batteries into fire. The batteries may explode.
 - CAUTION: Do not open or mutilate batteries. Released electrolyte is harmful to the skin, eyes, and may be toxic.
 - CAUTION: A battery can present a risk of electrical shock and high short-circuit current through conductive materials could cause severe burns. The following precautions should be observed when working on batteries:
Before installing or replacing the batteries, remove jewelry such as wristwatches and rings, or other metal objects.
When working on batteries should wear rubber gloves and boots. Also, must use tools with insulated handles, and do not lay tools or metal parts on top of batteries.
Remove battery grounds during installation and maintenance to reduce likelihood of shock. Remove the connection from ground if any part of the battery is determined to be grounded.

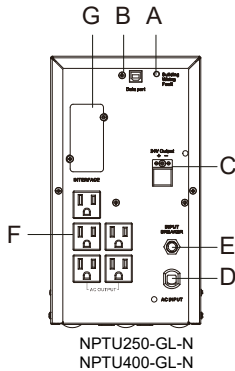
2. UPS System Block Diagram



3. Front Panel Display


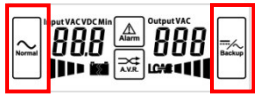
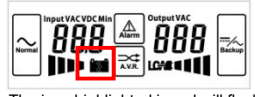
LCD	Status
<p>The diagram shows the front panel display with numbered callouts 1 through 7. 1 points to the 'Input VDC/VDC Min' label. 2 points to the 'Output VDC' label. 3 points to the 'LCD' label. 4 points to the 'Battery' label. 5 points to the 'Load' label. 6 points to the 'AC' label. 7 points to the 'ON/OFF' button.</p>	1. AC mains mode
	2. Battery/inverter mode
	3. Automatic Voltage Regulation (Buck or Boost)
	4. Battery capacity
	5. Load capacity
	6. UPS status
	7. Power ON/OFF button

4. Product Features



- A: Wiring Fault
- B: USB Port
- C: DC 24V Output
- D: AC Power Cord
- E: Input Breaker
- F: AC Outlet
- G: Intelligent Slot (Optional)

5. Button Function

Status	Action Description	LCD Display
Power ON	Press the on/off button for 5~8 seconds, release the button when the alarm sounds. The UPS will now turn on.	 The (2) icons highlighted in red will flash
Power OFF	Press the on/off button for 5~8 seconds, release the button when the alarm sounds. The UPS will now turn off.	 The (2) icons highlighted in red will flash
Alarm silence	When the UPS is in an abnormal state, the alarm will sound. Press on/off button for 1/2 second (Do not hold the button longer than 1 second). This will silence the alarm.	
Self-Test	(With the UPS in AC mains operation) press the on/off button for 1~2 seconds, release the button when the alarm sounds a short beep. The UPS will perform a self-test.	 The icon highlighted in red will flash
To clear the error icon	Hold down the on/off button for 5~8 seconds, release the button when the alarm beeps. The error icon will be removed.	

6. Installation and Power On

1. Installation:

- Please read **Section 1. Safety Instructions and Storage/ Battery Care** before installing.

2. Connect equipment to the UPS. Avoid using extension cords.

- Do NOT connect printers, heaters, or copiers to the UPS.
- During a power outage or other AC problems, the AC outlets receive power for a limited time from the UPS.



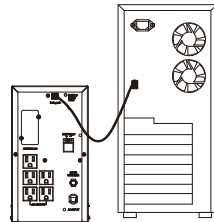
- Press the ON/OFF button for 5~8 seconds to turn the unit on.
- The UPS should charge the battery for at least 6 hours to ensure sufficient runtime.
- Press ON/OFF button in 5~8 seconds. The alarm sounds to confirms that the UPS is on and provide power to outlets.

3. Cold start the UPS



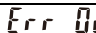


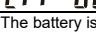
- Use cold start feature to supply power to connected equipment from the UPS batteries when there is no utility power. To turn on the UPS see step 2 above.

4. Connect and install management software

- UPS is provided with management software for unattended system shutdown, UPS monitoring, and UPS configuration.



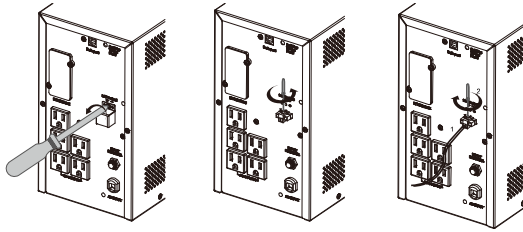
7. Audible Indicators and Status Icons

If the UPS...	Possible cause...
In Battery Mode: Alarm sounds every 2 seconds. (alarm for 0.5 second and stops for 1.5 seconds)	UPS is running on battery. You should consider saving any work in progress.
a. Low Battery: alarm sounds every 0.2 seconds b. Low Battery power off: Continuous alarm	Low battery condition and battery run-time is very low. Promptly save any work in progress, exit all open applications, and shut down the operating system.
Continuous tone with  flashing.	UPS is overloaded.
Continuous tone with  illuminated. a. Press ON/OFF button one time to mute the alarm. b. Continuous tone will persist until battery LOW. (<11Vdc each battery)	 : Inverter short  : Inverter over voltage  : Transformer over temperature  : DC power output short circuit
Battery Replacement Alarm: alarms every 4 seconds (alarms for 1 second and stops for 3 seconds)	The battery is near the end of useful life or damaged and should be replaced.

8. Specifications

Model		NPTU250-GL-N	NPTU400-GL-N
Input	Voltage range	120V _{AC}	
	Voltage range	96-144Vac (±5Vac)	
	Connection	NEMA5-15P	
	Frequency	60 Hz	
Output	UPS Capacity (total)	250VA / 200W	400VA / 320W
	Rated Voltage	120V _{AC}	
	Transfer time	Typical 2 - 6 ms	
	Waveform	Pure sine wave	
DC Power	Output Voltage	24V _{DC}	
	Output Current	3A (max)	
Physical	Dimension (D x W x H)	12 x 5.9 x 10.5 inch 304.8 x 149.9 x 266.7 mm	
	Net Weight	38.6 lb 17.5 kg	
	Packaging Dimension (D x W x H)	16.1 x 9.8 x 15.5 inch 408.9 x 248.92 x 393.7 mm	
	Gross Weight	41.9 lb 19 kg	
	Operating temperature	32 - 104 °F (0 - 40 °C)	
Environment	Humidity	Operating Humidity: 5% to 90%	
	Noise level	<40dB, convection cooling	

9. 24VDC 3A Output Installation



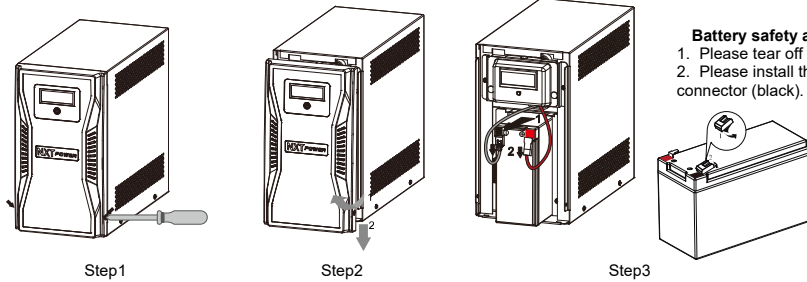
Must use external wires or CL2 equivalent wire. The wire diameter which not less than 22AWG can be used, and the length must be less than 3.0 meter (10ft). Insure positive is connected to (+) and negative is connected to (-) as marked on the UPS.

10. Battery Replacement Procedure

Qualified Service Personnel Only

PLEASE READ ALL OF THE CAUTIONS AND WARNINGS BEFORE ATTEMPTING TO REPLACE THE BATTERY MODULE

Warning: Lead-acid battery could be drained and damaged by long-term self-discharge naturally without maintenance.



Recycling the Used battery

Contact your local recycling or hazardous waste center for information on proper disposal of the used battery.



192321582001001