



## Battery connection procedure for NPTU600 / 800 Pro product

For safe transportation, this unit is shipped with the batteries disconnected. The batteries must be connected before the UPS is put into operation. The below instructions will guide you through the battery connection process.

- 1) Detach the plastic front panel by using a Philips screwdriver and removing the (2) screws located on the front bottom left and right side of the unit (fig. 1). Take care not to discard the screws as they will be used to reattach the front panel.



Fig.1 (Both left and right side)

- 2) Now gently pull the front plastic panel down and out to gain access to the batteries (fig.2).



Fig. 2

- 3) Locate the Battery DC connector and inverter DC connector inside the battery cavity (Fig. 3)



Fig.3

- 4) Connect the (2) battery connectors together (Fig. 4). Ensure the red side is connected to red and black to black. Re-attach the plastic front panel and screw down. The UPS is now ready to be placed in service. See user manual for more information.



Fig 4.



### **Battery connection procedure for NPTU1100 / 1500 Pro product**

For safe transportation, this unit is shipped with the batteries disconnected. The batteries must be connected before the UPS is put into operation. The below instructions will guide you through the battery connection process.

- 1) Detach the plastic front panel by using a Philips screwdriver and removing the (2) screws located on the front bottom left and right side of the unit (fig. 1). Take care not to discard the screws as they will be used to reattach the front panel.



Fig.1 (Both left and right side)

- 2) Now gently pull the front plastic panel down and out to gain access to the batteries (fig.2).



Fig. 2

- 3) Locate the Battery DC connector and inverter DC connector inside the battery cavity (Fig. 3)

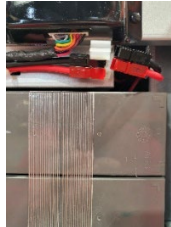


Fig.3

- 4) Connect the (2) battery connectors together (Fig. 4). Ensure the red side is connected to red and black to black. Place the connector in between the connector holder and lock the holder down. Re-attach the plastic front panel and screw down. The UPS is now ready to be placed in service. See user manual for more information.



Fig 4.